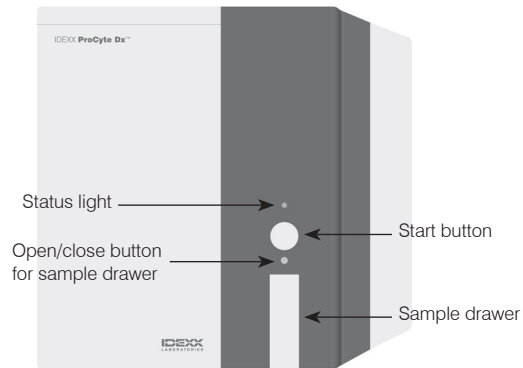


ProCyte Dx* Analyzer Components



Sample Tube Adapters

Before you begin collecting a patient sample and processing it in the ProCyte Dx analyzer, be sure you have the correct tube adaptor loaded in the sample drawer of the analyzer. The ProCyte Dx analyzer has three sample tube adapters, so you can use various tube sizes, if necessary.



Regular Adapter

Use with standard 13 x 75 mm diameter tubes (such as IDEXX VetCollect* tubes and BD Vacutainer* 13 x 75 mm [2.0 mL] tubes with a Hemoguard* closure).



Micro Adapter

Use with micro tubes in the following sizes: 10.25 x 50 mm, 10.25 x 64 mm, or 1.3 mL (such as Sarstedt 1.3 mL tubes).

Important: Remove tube cap before analysis.



QC Adapter

Use with e-CHECK* (XS) quality control blood samples.

Sample Volume Required

EDTA Tube Style	Sample Type	Minimum Sample Volume
IDEXX VetCollect* tubes	Whole blood	500 µL
BD Vacutainer* 13 x 75 mm (2.0 mL) tubes with a BD Hemoguard* closure	Whole blood	See tube manufacturer's guidelines
Sarstedt 1.3 mL micro tubes	Whole blood	650 µL
10.25 x 50 mm or 10.25 x 64 mm tubes	Whole blood	See tube manufacturer's guidelines

Exiting Standby Mode

The analyzer enters Standby mode daily at a user-defined time (for information on setting this time, see the *IDEXX ProCyte Dx Hematology Analyzer Operator's Guide*) or when the ProCyte Dx analyzer is idle for 11 hours and 45 minutes.

To exit Standby mode, tap the ProCyte Dx icon on the IDEXX VetLab* Station Home screen (the icon will have a Busy/Standby status) and then tap **OK** to confirm that you want to exit Standby mode.

Running a Patient Sample

Before you can process a sample on the ProCyte Dx analyzer, you must specify the client, patient, and test information on the IDEXX VetLab Station. The work flow for entering this information varies depending on whether you have connected your IDEXX VetLab Station to your practice management system using IDEXX SmartLink* or IDEXX InterLink* connectivity.

Important: If you fail to enter the client, patient, and test information *before* pressing the Start button on the analyzer, results will not be reported.

1. If the patient you wish to run does not appear in the Pending or Census list on the IDEXX VetLab Station Home screen, tap **Analyze Sample** on the Home screen, enter the client/patient information, and then tap **Next**.

OR

If the patient you wish to run appears in the Pending or Census list on the Home screen, tap the patient name and then tap **Run**.

2. On the Select Instruments screen, select the **Reason for Testing**.
 3. Tap the ProCyte Dx analyzer icon to select it and add it to the current analysis job list.
 4. Tap **Run**. The patient information is sent to the ProCyte Dx analyzer. A dialog box appears with information about the selected patient and instructions for processing the sample on the analyzer.
 5. Read the instructions and tap **OK**. The ProCyte Dx icon now appears in the patient's job status area (on the IDEXX VetLab Station Home screen) with an In Process status.
 6. On the ProCyte Dx analyzer, ensure the sample drawer is open and that the appropriate tube adapter is in place.
 7. Mix the sample with the anticoagulant by placing the tube on a rocker for 30 seconds or by gently inverting it 10 times.
 8. Immediately place the sample in the tube adapter in the sample drawer
- Important:** If you are using a microtainer tube, remove the cap before placing the tube in the correct tube adapter.
9. Press the **Start** button on the analyzer. The sample drawer automatically closes and the analyzer begins processing the sample.

IDEXX Technical Support

U.S./Canada/Latin America 1-800-248-2483

Europe 00800 1234 3399

Australia 1300 44 33 99

New Zealand 0800-102-084

Asia 0800-291-018

Running the Monthly Rinse Procedure

1. Tap **Instruments** on the IDEXX VetLab* Station Home screen.
2. Tap the **ProCyte Dx** tab and then tap **ProCyte Dx Diagnostics**.
3. Tap **Monthly Rinse**. The Monthly Rinse message box displays and the sample drawer opens on the ProCyte Dx* analyzer.
4. Read the message and verify that the time required for the procedure does not have an impact on your work flow.
5. If you do not have IDEXX Hydro-Clean, prepare a 5% bleach solution by combining filtered, unscented bleach with distilled/deionized water. The ratio of bleach to distilled/deionized water varies depending on the concentration of the bleach (for example, Clorox* Regular Bleach has a 6% concentration, so the solution should be 5 parts Clorox Regular Bleach and 1 part distilled/deionized water).
6. Dispense 2 mL of IDEXX Hydro-Clean (or the 5% bleach solution) into a 13 x 75 mm (untreated or treated and rinsed) tube and insert the tube into the sample drawer on the analyzer.
7. Tap **OK**.
8. Press the **Start** button on the analyzer to begin the Monthly Rinse procedure. The ProCyte Dx icon on the Home screen displays with a Busy status and a progress bar that shows the percentage complete for the Monthly Rinse procedure.

Adding a Quality Control Lot

1. Tap **Instruments** on the IDEXX VetLab Station Home screen.
2. Tap the **ProCyte Dx** tab.
3. Tap **Quality Control**.
4. Tap **Add QC Lot**.
5. If you have a bar code scanner, scan the bar code on the e-CHECK* (XS) insert. If you do not have a scanner, enter the bar code into the Enter a Quality Control Bar Code text box and then tap **Next**.
6. Repeat step 5 for the remaining five bar codes. After each bar code is entered, the bar codes display in the Quality Control Bar Codes group box. When a bar code is entered successfully, a green check mark displays to the left of the bar code. When a bar code is deemed

invalid (because it does not exist or has expired), a red X displays to the left of the bar code and an error message may display.

7. Tap **Next**. The QC Lot now displays on the Quality Control screen.

Running Quality Control

1. Tap **Instruments** on the IDEXX VetLab Station Home screen.
2. Tap the **ProCyte Dx** tab.
3. Tap **Quality Control**.
4. Select the ProCyte Dx QC Lot you want to use and then tap **Run QC**.

Note: If there are no valid QC lots available, add a new QC Lot.

5. Warm the e-CHECK (XS) vial to room temperature (18°C–25°C [64°F–77°F]) for at least 15 minutes. Do not let the vial exceed room temperature.
Note: Do not warm the vial in your hand.
6. Verify the cap is secure and gently invert the e-CHECK (XS) vial to mix until the cell button in the bottom of the vial is completely suspended.
Note: Do not place e-CHECK (XS) on a mechanical mixer or rocker.
7. Tap **Next**. The ProCyte Dx sample drawer opens.
8. Ensure the QC adapter is in place in the sample drawer.
9. Immediately place the e-CHECK (XS) vial in the tube adapter.
10. Tap **OK**. The IDEXX VetLab Station Home screen appears.
11. Press the **Start** button on the analyzer.
12. If the e-CHECK (XS) vial has been at room temperature for less than one hour, return it to the refrigerator.
Note: e-CHECK (XS) is stable for 14 days once the cap is pierced, assuming it is not left at room temperature for more than one hour at a time.

Powering the Analyzer On/Off

It is recommended that you power off the analyzer, IPU, and the IDEXX VetLab Station once per week.

Tip: When powering off the ProCyte Dx analyzer and IPU, power them off at the end of the work day *before* the analyzer goes into Standby mode. If you intend to leave the ProCyte Dx analyzer powered off for more than two weeks, shut down the instrument by tapping **Shut Down for Shipping** on the ProCyte Dx Diagnostics screen.

To Power Off the Analyzer

1. Tap **Instruments** on the IDEXX VetLab Station Home screen.
2. Tap the **ProCyte Dx** tab.
3. Tap **Turn Off ProCyte Dx**. The Turn Off ProCyte Dx dialog box displays.
4. Tap **OK**. The IPU powers down automatically.
5. When the Standby procedure is complete and the analyzer alarm sounds, power off the analyzer using the switch located on the right side of the analyzer.
6. Tap **Shut Down** on the IDEXX VetLab Station Home screen to power it off.

To Power On the Analyzer

1. Ensure the IDEXX VetLab Station computer is powered on and that the touch-screen monitor displays the Home screen. If necessary, tap **Home** in the upper-left corner of the screen to access the Home screen. The ProCyte Dx icon appears with an Offline (black) status.
2. Power on the IPU by pressing the power button on the front of the IPU computer.
3. When the status of the ProCyte Dx icon on the Home screen changes from Offline (black) to Busy (yellow), power on the IDEXX ProCyte Dx analyzer using the switch located on the right side of the analyzer. The ProCyte Dx performs a variety of self-check procedures (if a self-check procedure fails, an alert message will display on the IDEXX VetLab Station Home screen). This process takes approximately 8 minutes.
4. If the self-check procedure is successful, the status of the ProCyte Dx icon on the Home screen changes to Ready (green) and the LED on the ProCyte Dx analyzer turns green (steady).

Changing the Reagent Kit/Stain Pack

For detailed instructions on changing the reagent kit or stain pack, see the *IDEXX ProCyte Dx Hematology Analyzer Operator's Guide*.